



ANNUAL REPORT

2012-2013

Care and Share Food Bank’s mission is to *bridge the gap between hunger and abundance*. We are the only food bank to serve Southern Colorado, to include the San Luis Valley, Upper Arkansas Valley, and southern I-25 corridor. Care and Share serves **31 counties, 52,000 square miles**, across Southern Colorado.

BOARD OF DIRECTORS & LEADERSHIP STAFF

- Steve Schneider, Chief Governing Officer
President, CB Insurance, LLC.
- Jim Hendren, Vice Chief Governing Officer
Owner, La-Z-Boy Furniture Galleries
- Betsy Sobral, Board Secretary
Community Volunteer
- Edward Gleason
Partner, Lewis, Roca & Rothgerber, LLP
- Garry Hill
President, Cartridge World
- Trevor Miller
Managing Director of IT, United States Olympic Committee
- Wendy Pelton
Community Volunteer
- Mike Ruebenson
COO, La Plata Communities
- Dan Steever
President and Publisher, The Gazette
- Peter A. Vujcich
Vice President, Wells Fargo Bank
- Lynne Telford
President and CEO, Care and Share Food Bank
- Wallie Dingwell
Chief Financial Officer
- Lori Kapu
Chief Operating Officer
- Stacy Poore
Chief Development Officer

Dear friends,

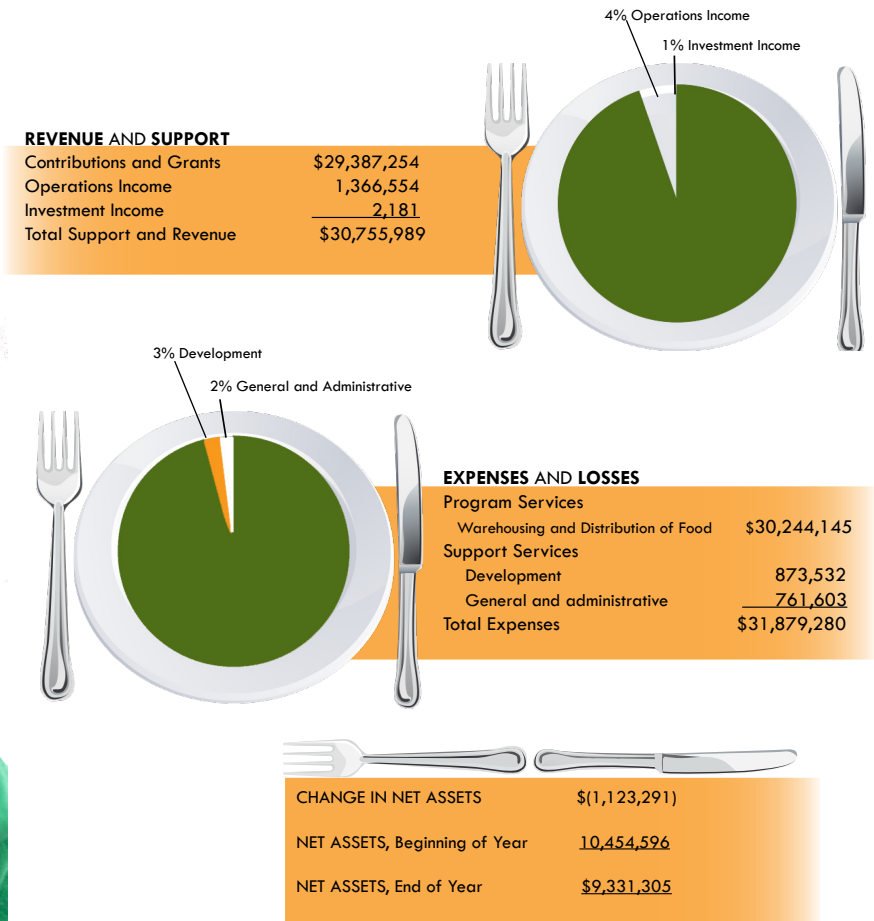
We’ve met many people this year who told us about the difference that Care and Share has made in their lives and the difference we have made in the community. These are good people and we could fill pages with their stories of hope and courage. They are families with small children, seniors with health issues, neighbors who’ve fallen on hard times, people who lost their homes to fires or floods - all of them facing the fear of not having enough to eat. Each of these people found comfort and security in the healthy, nutritious food they received. Our ability to help our food insecure neighbors would not be possible with the support you, our generous community, have provided.

We are pleased to present this annual report that briefly tells our story about the past year’s journey. Every gift you have made of food, time, and financial support has made an impact and changed lives. Through our programs, our partner agencies, and contributors, we are finding more ways to serve our neighbors who face the reality of hunger every day. We look forward to our partnership with you so that together we can continue to bridge the gap between hunger and abundance throughout Southern Colorado. On behalf of everyone at Care and Share, as well as the more than 104,000 people who found comfort in the meals you made possible, we thank you.

Lynne Telford, President and CEO

Steve Schneider, Chief Governance Officer

FINANCIAL SUMMARY





YOUR SUPPORT AT WORK

Care and Share is a grateful and careful steward of every contribution. We are proud to report that **\$0.95 of every dollar goes directly to food and program support** and that only \$0.05 of every dollar goes to administrative and fundraising costs.

Volunteers	
Instances of Volunteering	8,315
Volunteer Hours	30,698

Harvest Giving Society	
Harvest Members	433

Children's Nutrition Initiative	
<u>Send Hunger Packing</u>	
Back Packs Distributed	21,960
Meals Distributed	614,880
Children Served	1,265

<u>Healthy Kids Club</u>	
Snacks Distributed	101,383
Meals Distributed	3,549
Children Served	3,029

<u>Summer Food Service Program</u>	
Snacks Distributed	33,733
Meals Distributed	26,072
Children Served	2,593

Share Our Strength™ Cooking Matters	
Classes Taught	26
Number of Volunteers	92
Participants Served	588

Senior Nutrition Initiative	
Food Boxes Distributed	18,993
Seniors Served	1,701

SNAP/Food Assistance Outreach	
Clients Assisted	1,357
Meals Attributable to Outreach	423,262

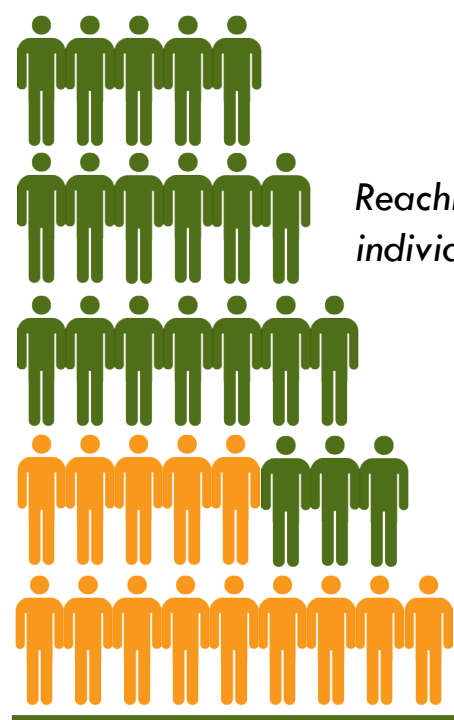
Mobile Food Pantries	
Conducted	243
Participants Served	40,248
Meals Attributable to Outreach	653,996

Harvest of Love School Food Drive	
Schools Participating	226
Pounds of Food Collected	96,405
Dollars Raised	\$131,162

Care Drive Food Drive	
Businesses Participating	232
Pounds of Food Collected	45,273

Turkey Drive	
Number of Turkeys Donated	5,165
Total Number of Turkeys Distributed	10,833

To view our Disaster Community Impact Report, please visit our website, www.careandshare.org



Reaching 104,358 of the 165,390 individuals who are food insecure in Southern Colorado.

BY THE NUMBERS

Pounds of Food Distributed	18,626,638
Meals Distributed	15,522,198
Pounds of Produce Secured Locally	3,854,327
Pounds of Food Distributed per Person in Poverty	101
Percent of Pounds Distributed Classified as Highly Nutritious	87%
Spoilage/Waste as a Percent of Inventory	0.46%



31 Counties
97 Residential Agencies
210 Food Pantries
17 Soup Kitchens



MEALS DISTRIBUTED BY COUNTY

County	Meals	County	Meals
Alamosa	287,540	Kiowa	32,767
Archuleta	66,965	La Plata	286,903
Baca	20,598	Las Animas	167,958
Bent	118,645	Lincoln	61,842
Chaffee	147,633	Mineral	2,647
Cheyenne	57,121	Montezuma	124,618
Conejos	53,625	Otero	278,796
Costilla	53,513	Ouray	5,493
Crowley	162,533	Prowers	147,800
Custer	81,673	Pueblo	1,385,658
Dolores	11,260	Rio Grande	57,409
El Paso	6,321,170	Saguache	59,436
Fremont	639,181	San Juan	3,952
Gunnison	33,868	San Miguel	77,910
Hinsdale	8,671	Teller	478,063
Huerfano	99,103		



To view or download this report, including full list of donors, please visit www.careandshare.org click on News & Events, Annual Report or call 719-528-1247

CARE AND SHARE FOOD BANK FOR SOUTHERN COLORADO

2605 Preamble Point | Colorado Springs, CO 80915 | 719-528-1247 100 Greenhorn Drive | Pueblo, CO 81004 | 719-296-6995